



The ALRID News... ALRID... The Interpreter's Source for Success!

VOLUME 9, ISSUE 3

NOVEMBER/DECEMBER 2009

Inside this issue:

Feds Crack Down on Call Center Scheme	2
RID-NIC Testing Supersite	2
Georgia Parents Fight for ASL	3
Unveiling of the Helen Keller Statue	3
The Photos of Helen Keller Statue	4
Troy ITP News	5
2010 RID Region III Conference Information	6
2010 RID Region III Conference Presentation Proposal Form	7
JCCD Workshop	8
Mobile Division Workshop	9
2010 Birmingham Silent Dinner List	10
ALRID Membership	11
The ALRID News	12

Special points of interest:

- 26 People arrested for stealing more than \$50 million from FCC.
- RID-NIC Testing Supersite is still in Tuscaloosa, AL.
- Students with learning disabilities can do very well learning ASL.
- The Helen Keller II statue was unveiled in Montgomery State Capitol on December 4, 2009.
- We have grown from 22 enrolled ITT majors to over 155 in just 6 short months.

President's Message

Happy December to you all! It seems that our weather isn't sure which direction to go. One day it is warm the next it is cold. One day it is sunny while the next it is a down-pour. I am glad to report that your board knows the direction we are traveling. The board met in November and had a different kind of meeting. This meeting was a true working meeting where we brainstormed ideas about the purpose and direction of ALRID. There were two non-board members present and their input was invaluable. The board will meet in January, March, and May to continue working on ideas for our future. I would like to personally invite each and every one of you to attend these meetings. Your knowledge and experience is definitely needed.

The AAD representative present at the November board

meeting was Amy Peterson, Secretary of the AAD. Amy is now a Certified Deaf Interpreter and I would like to congratulate her on this great accomplishment. Mike Lozynsky, AAD President, and I discussed who will be representing AAD on the ALRID Board. Mike made the decision that Amy Peterson will continue to be the AAD liaison to ALRID. Mike has accepted more responsibility with his position at Sorenson which meant more time devoted to work so it made sense for Amy to be the new representative. Mike will continue to contribute and chime in on issues but Amy will be our main contact. Amy brings many years of experience and knowledge to the board and we are grateful to have her.

With the new year almost here many of you may be wondering what the plans are for the ALRID biennial confer-



Melvin Walker, ALRID President

ence. The board has made the decision to partner with Troy University for the first Alabama Interpreting Metamorphosis (AIM) conference. This conference will offer several tracks of training and will be something that none of us will want to miss. Lynne Wiesman is working her magic to offer the best training with the best trainers possible. Be on the look out for more information from Lynne and make your plans for June 2010 to be in Troy, Alabama. I know that I will be there!

As we begin a new year please think of what new things ALRID can do for you. I wish you and everyone you love a wonderful rest of the year and a HAPPY NEW YEAR!





Feds Crack Down on Call Center Scheme

Submitted by: Amelia England, ALRID Editor (*Credited by Armen Keteyian from CBS News*)

26 People Arrested for Stealing More Than \$50 Million from Government Fund that Provides Video Interpreters for the Deaf.

November 19, 2009:(CBS) In a widespread scheme one assistant Attorney General described as "outrageous and insidious," 26 people from seven companies in eight states were indicted Thursday for stealing more than \$50 million from a government fund that provides video interpreters that translate sign language for the deaf and hearing impaired outside their world. The service, overseen by the Federal Communications Commission (FCC), allows more than 30 million hearing disabled Americans to communicate with those who can hear.

"It's not going to be tolerated," Assistant Attorney General Lanny Breuer told CBS News. "They were running up the money, and taxpayers were paying for services that weren't really occurring."

In a series of coast-to-coast raids, individuals from New York, New Jersey, Florida, Texas, Arizona, Nevada, Maryland and California were arrested. They allegedly submitted thousands of "false and fraudulent" claims for Video Relay Service (VRS) calls that never involved hearing impaired people. Instead, the government charged, scammers placed millions of dollars of phony calls to pre-recorded radio programs, 800 numbers or podcasts - never translating anything but billing the FCC's fund nearly \$400 an hour for every hour the employee was on the phone. "The fraud issue is something

we're going to have to deal with," prominent disabled rights attorney Jeff Rosen told CBS News. "But we can't allow that to diminish the access that deaf people have." Begun back in 1993, in recent years VRS calls have skyrocketed - rising from about 100,000 minutes per month in 2004 to nearly 9 million minutes per month in

2009. Overall, the industry is expected to generate nearly \$800 million in revenue this year alone.

For more information:
http://www.cbsnews.com/stories/2009/11/19/cbsnews_investigates/main5713910.shtml



A man uses a service that provides video interpreters that translate sign language for the deaf. Twenty-six people were arrested Nov. 19, 2009 in a scheme to steal millions from the service. (CBS)

"They were running up the money, and taxpayers were paying for services that weren't really occurring."

RID-NIC Testing Supersite

Submitted by: Sereta Campbell, Interpreter



RID-NIC Testing Supersite is still in Tuscaloosa, AL and if you are interested in taking test in Tuscaloosa area, please feel free to contact me to schedule an appointment for taking test. If you have any questions, contact me:

Sereta Campbell at
 205.759.0314 or email to
Sereta.campbell@mh.alabama.gov.

DEGREE REQUIREMENTS:
 (Updated March 31, 2009 from www.rid.org)

RID announces degree requirement extension for hearing candidates for certification: Associate's degree requirement deadline postponed until June 30, 2009.

Beginning June 30, 2009, hearing candidates for certification must have a minimum of an associate's degree to take a performance exam. Deaf candidates must have a minimum of an associate's degree after June 30, 2012.

Georgia Parents Fight for ASL

Submitted by: Amelia England, ALRID Editor (*Credited by Robin Hansen*)

Alternative for learning disabled students.
December 2, 2009: One of the biggest hurdles children with language based learning disabilities face is learning their OWN native language. While a minority of persons with learning disabilities have great oral language skills, most do not. In fact, slow language development in children is the single biggest red flag of a reading disorder or autism. If one struggles to learn oral language, acquiring written language (which is far more complex) will be and even larger hurdle. In fact due to current inadequate instruction, most of these kids will never acquire reading or writing skills. However if the children are taught by skilled teachers using multi-sensory instruction, these children will learn to read.

The same principle applies to learning a second language. Children can learn a second language if it is multi-

sensory. American Sign Language or ASL is a natural multi-sensory language. Students with learning disabilities can do very well learning ASL. Bayhill High School, a school for children with learning disabilities in Oakland, California, offers American Sign Language as well as a multi-sensory Spanish class.

Most four year colleges expect applicants to have completed two years of a second language in High School. This leaves students with learning disabilities out in the cold, excluding them from even applying. As a general rule, high schools offer Spanish or French in traditional instruction. The LD children who do attempt to take this class are set up for failure and few succeed. It is extremely rare for any high

school to offer ASL.



Hands ARE communication

The parents of Gwinnett County Georgia understand the benefits of offering ASL curriculum in their local schools. They have been working tirelessly to convince Gwinnett County Public Schools to add ASL to their curriculum. Their deadline to send in

comments is Friday December 4. Community members and employees are invited to participate in its annual review of Gwinnett's Academic Knowledge and Skills (AKS) curriculum, set for Nov. 2 - Dec. 4, 2009.

For more information:

<http://www.examiner.com/x-4959-Special-Education-Examiner~y2009m12d2-American-sign-language-the-perfect-alternative-for-learning-disabled-students>



"It is the first statue of a child, and the first of a person with a disability to be placed in the Rotunda."

Unveiling of the Helen Keller Statue

Submitted by: Diann Willis, ADRS Coordinator of Deaf Blind Services

The Helen Keller II statue was unveiled in Montgomery on December 4, 2009 in the Old Supreme Court Library of the State Capitol. It is an exact replica of the one unveiled in the U.S. Capitol Rotunda on October 7, 2009. It is the first statue of a child, and the first of a person with a disability to be placed in the Rotunda. Many Deaf-Blind Coalition members, ADRS staff and agency leaders witnessed the unveiling. Dedicated interpreters Wanda Cobb and Susan Gordon, as well as Deaf Support Specialists, Mona Ivey, Amelia



Helen Keller traveled the world, wrote 14 books and championed women's suffrage and workers' rights.

England and Jamie McPoland were honored to represent ADRS while interpreting for Phyllis Clifton, President of Alabama Association of the Deaf-Blind. They all

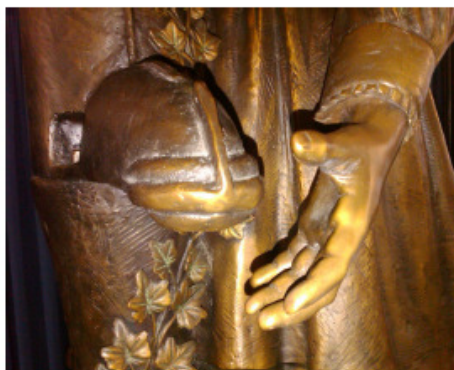
agreed it was a wonderful experience.

The process of exchanging the previous Alabama statue to the current statue of Helen Keller began in 2004. A congressional Act and Act of the State Legislature was necessary before the statue received final approval. Selection of the best artist began

in 2005 and all funds for the project were privately raised. Dr. Joe Busta, former AIDB President and Mr. Elmer Harris, former CEO of Alabama Power was instrumental in bringing the project to fruition. Representing the Keller family was Mrs. Keller Johnson-Thompson, grandniece of Helen Keller who shared her thoughts about Helen with the audience.

Helen Keller II will tour the state in 2010 and then be on permanent display in the Alabama State Capitol. The tour will be sponsored by the Helen Keller Foundation. The statue is made of bronze and its base is made with Alabama marble. It weighs almost 600 pounds.

(See Helen Keller Statue photos on Page 4)



The water pump where Helen made her miraculous breakthrough. She learned 30 words that day.



For more information on Helen Keller, go to the website: <http://www.afb.org/braillebug/hkgallery.asp?tpid=1>

Troy Interpreter Training Program News

Submitted by: Lynne Wiesman, Director of ITP



We have been busy in Troy! The ITP is in full swing and we have a great deal to share. We have grown from 22 enrolled ITP majors to over 135 in just 6 short months. The interest in the online and on-campus program is incredible!!!

We are expanding our staff to include a full time faculty member, Christopher Patterson who will join us in the Spring. Additionally, Harriett Hollingsworth will start work as a support person for the ITP office and the new Language Lab. Jimmy Smith will be the primary Language Lab Mentor and developing new opportunities for the students to be exposed to ASL and increase their ASL competency. Joining him will also be Anna Gardner (soon to be Morgan) who will be moving to Troy and has just graduated from the University of Tennessee at Knoxville's ITP. Additionally, we will be hiring one student worker to work some as well to support the program and the Language Lab!

We will begin installation of the new Language Lab facilities in the Spring semester. This will be a state of the art Language Lab with 13 carrels (one wheelchair accessible) and an instructor station. Each station will have software that will allow students to videotape their interpretations and analyze them. We are also ordering about \$25,000 in materials for the students to utilize in the Language Lab. It's exciting and we will have an open house to showcase our new Language Lab as soon as its complete. We will also allow interpreters from the community to access our materials and to use some of the

CEU bearing materials for their continuing education!

A reminder also - Troy University's ITP will offer a test course via the AIDB Regional Centers this Spring. Interpreters (deaf and hearing) and those interested in interpreting may sign up to take the course via continuing education (for CEUs) or for college credit. The course will be taught by Lynne Wiesman on Tuesday/Thursday 5:30-6:45. Interpreters will be provided. Anyone who would like to register for this course (who is not already a Troy student) should contact the University's admissions office to inquire. The admissions process can take 30-45 days, those interested are encouraged to apply ASAP!

Look for these events next year and plan to join us:

January 9, 2010 - 9:00-1:00 workshop at JCCD on Language & Interpreting Self Assessment (available online for those who cannot travel) presented by Lynne Wiesman. This workshop will help you to be able to look at your language and interpreting skills and analyze it to determine the challenges and how to address them.

January 23, 2010 - 9:00-4:00 Discourse Analysis workshop at Troy presented by Dr. Cynthia Roy - you won't want to miss this one! (Co-Sponsored by AIDB and available via Wimba and at all 8 AIDB Regional Centers - fyi, the Montgomery Regional Center's polycom system is now operational!!!)

Contact aslanditp@troy.edu for more information and registration.

January 28-31, 2010 - TerpExpo in New Orleans (www.terpexpo.com) - FUN FUN FUN and lots of great workshops plus the only one close enough to drive to (Peter Cook, Crom Saunders, Keith Wann and many more.) Some great performances and incredible workshops!

February 13, 2010 - 9:00-5:00 MCE to ASL to BLAP workshop presented by Lynne Wiesman and Amy Peterson at JCCD and available via Wimba online streaming. This workshop will look at the differences in a transliterated and interpreted product and help participants to be able to make English-like signing more ASL. This workshop will benefit students, working interpreters, and Deaf interpreters! We will also address the aspect of teaming. Contact lwiesman@troy.edu for more information.

June 20-24, 2010 - Alabama Interpreting Metamorphosis (AIM) workshops on Troy Campus (in conjunction with ALRID conference!) Contact lwiesman@troy.edu for more information.

Information on how to connect via Wimba will be distributed upon registration. A high speed connection is needed!

Finally, we are putting together an ASLTA training in cooperation with ADRS and ACCESS (providing ASL instruction to high schools). Watch for more information on this if you are interested!

Have a very safe and restful holiday season!



"We have grown from 22 enrolled ITP majors to over 135 in just 6 short months."

Passport to Possibilities

RID's Region III Conference
July 21-24, 2010
Bloomington, MN

An invitation is extended to all interested persons to submit a paper for consideration to present for RID's Region III Conference

We seek presentations and papers representing current research related to the theme of this conference, *Passport to Possibilities*. Proposals should focus on the future of interpreting as it pertains to diversity in language and culture, and as put into interpreting practice in legal, medical, mental health, education, business and religious settings; for deaf and hearing interpreters. Particular attention will be given to presentations on how Deaf and hearing teams work best together. Presentations designed for specific skill levels and skill sets will also be considered as well as non-interpreting related topics. Special consideration will also be given by presentations that consider the changing field as impacted by issues of globalization and working with New American Deaf populations.

The conference is designing a program around 3 hour blocks of time; however, proposals for 6 hour sessions are welcome. The conference will emphasize a visually supported environment, meaning all participants and presenters are encouraged to use sign language as much as possible during their time at the conference.

Presenters will receive conference registration; overnight accommodation; per diem for the day of presentation; travel reimbursement up to \$350; and an honorarium of \$300 for a 3 hour presentation. Honorarium for presentations longer than 3 hours will be negotiated on a case by case basis.

Submission Process

To be considered for this program, submit the following electronically by January 20, 2010:

- 1) The completed Presentation Proposal Form (provided in a separate file).
- 2) A .doc or .pdf file, not exceeding two pages in length, that includes:
 - a. A submission aligned with the conference theme (identified above)
 - b. A clear outline of your measurable and achievable educational objectives.
 - c. A one-paragraph summary of your proposal for the conference program book.
 - d. A one-paragraph biographical sketch of the presenter(s).
- 3) The presenter(s) resume(s).

Send electronic submissions to Kelly Murphy, Program Committee Coordinator, at kemurphy00@yahoo.com. Deadline for submission is January 20, 2010.

2010 RID Region III Conference
Presentation Proposal Form
This form must be completed and submitted with your proposal

Name of Primary Presenter:	
Additional Presenters, if applicable:	
Organization (if applicable):	
Mailing Address:	
VP/Telephone (home):	(work):
FAX:	E-mail:
TITLE OF PRESENTATION (Required; must be final):	

TYPE OF PRESENTATION

- ☐ **Workshop** (3 hours) teaches specific skills for expanding knowledge.
- ☐ **Extended Workshop** (6 hours) allows for in-depth teaching of specific skills for expanding knowledge.
- ☐ **Panel Discussion** (up to 3 hours) provides a means for discussing views and experiences among panelists and includes audience participation, questions, and answers.
- ☐ **Professional Discussion** (up to 3 hours) provides a means for presenting a specific paper, research, views and individual experience.

Instructional Level-Please indicate your target audience.

- ☐ **Introductory** – This level of instruction assumes that the participant knows little or no information within the presentation area covered. The focus of the activity/presentation is “general orientation and increased awareness.”
- ☐ **Intermediate** – This level assumes the participant has a general familiarity with the literature and professional practice within the presentation area covered. The focus of the activity/presentation is “increased understanding and application” by the participant.
- ☐ **Advanced** – This level assumes the participant has thorough familiarity with current literature and professional practice within the presentation area covered. The focus of the activity/presentation is “recent advances, future directions, and application of research.”
- ☐ **Teaching** – This level assumes the participant to be an interpreter educator. The content of the activity will focus on acquisition of current pedagogy for teaching interpreters and transliterators.

Are you willing to present more than one time? ☐ Yes ☐ No

How will you be conducting your presentation? (once the contract is signed, you will not be able to alter the language mode of your presentation)

☐ ASL ☐ Spoken English ☐ Other

If given an option, are there particular days of that week you would prefer to present?

☐ Thursday ☐ Friday ☐ Saturday

Audio-visual materials needed: _____

Receipt of electronic proposals will be confirmed by the Program Committee. If you do not receive confirmation of receipt within one week following submission, please contact the Program Committee Coordinator at kemurphy00@yahoo.com.

HOLD THE DATE!

Janice Capilouto Center for the Deaf will be offering a **Workshop for Interpreters, Mentors and Educators**

Language & Interpreting Self-Assessment

Presenter: Lynne Wiesman
9:00AM – 1:00PM

Saturday, January 9, 2010
JCCD, 2125 E. South Boulevard, Montgomery, AL 36116

Contact: Cass Moreland to register or to request accommodations
(334) 288-0240 ext. 238 or cmoreland@eastersealsca.org

In the event the workshop is cancelled, you will be issued a full refund, if paid in advance. Contact Cass

Registration Fee: \$25
(Half Price for JCCD Contract Interpreter Vendors)

This presentation explores the challenges of professional development within the specialized discipline of interpreting in educational settings. Frequently, interpreters in education seeking out professional development deal with isolation, time constraints, limited expertise, limited resources, etc. These factors are exacerbated by the dearth of training opportunities assisting interpreters in advancing their skills, knowledge, credentials, etc. Even when training is provided, it frequently does not address the unique and particular skill development "gaps" identified. Compounding this problem is the need for many to become certified at higher levels or licensed in order to obtain or maintain employment. Providing interpreters with a tool that allows them to self-assess both their language (Sign Language and English) and interpreting skills (Sign Language to English and English to Sign Language) allows them to capitalize on the very things that are considered challenging.

Workshops are applicable to the interpreting process no matter in what venue you find yourself working.



0.4 RID CMP/ACET CEUS Pending



Name		<input type="checkbox"/> Deaf <input type="checkbox"/> Hearing <input type="checkbox"/> H/H	
Address			
City		State	Zip
<input type="checkbox"/> Phone <input type="checkbox"/> TTY <input type="checkbox"/> VP ()		Fax ()	
E-Mail		Accommodation Request	
Select Workshop(s) Attending Below:			
Language & Interpreting Self-Assessment			

Janice Capilouto Center for the Deaf and the Office of Deaf Services, Dept. of Mental Health and have joined together to offer this workshop to the Montgomery Community of Interpreters, Signing Community and Interpreting Students.



Mobile Division of ALRID Present

"Do You Get Me?"

African American: Deafness and Mental Health

Interpreting Workshop for Students and Interpreters

Presenter: Lee Stoutamire, CI/CT, MH-Q, LMT

A look at cultural appropriateness as it pertains to the African American community, black/Deaf, mental illness, and Interpreting.

PEPNet-South is an Approved RID CMP Sponsor for Continuing Education Activities. This Professional Studies program is offered for **0.4 CEUs** at the "little/none" Content Knowledge Level.

Lee is a Phi Theta Kappa and upon completing his studies in 1996, started his interpreting career with Volunteers of America. During his time with Volunteers of America Lee was also the apartment manager for Onderdonk Cottages, which are designed specifically for individuals who are deaf and hard of hearing. After transferring from the Volunteers of America Lee worked 7 years for the Alabama Department of Rehabilitation Services as a staff interpreter providing services in a variety of settings.

In 2005 Lee became a staff member for the Alabama Department of Mental Health/Mental Retardation – Office of Deaf Services. (ODS) He is the Region IV Interpreter/Interpreter Coordinator. Mainly serving individuals placed in out-patient settings in the southern region of the state. He's currently an adjunct instructor for Bishop State Community College in Mobile, AL for the Interpreter Training Program. As if interpreting didn't keep his hands busy enough he's now a Certified/Licensed Massage Therapist.

Lee comes from a military family (always on the move), but calls Mobile home. In his spare time he likes to use his hands to perform culinary magic to excite the taste buds of family and friends or working out stress with a relaxing massage.

DATE:	January 23, 2010, Saturday
TIME:	8:00 a.m. to 12:30 p.m.
LOCATION:	AIDB, Mobile Regional Center 1050 Government St. Mobile, AL
COST:	\$25.00
ITP Students:	\$10.00
At the Door:	\$30.00

*Requests for accommodations must be made by **December 15, 2009***

.....
"Do You Get Me?" January 23, 2010 Workshop

NAME: _____

Email: _____

Phone: _____

Payment: ☐ \$25.00 **Before 1/4/2010** ☐ \$10.00 (Attach Proof of ITP)

Make checks payable to **MOBILE DIVISION OF ALRID.**

Send Registration to Lori Pituk at 2149 Taddish Dr. Mobile, AL 36695 (251) 463-6629

No refunds unless workshop is cancelled.

2010 Birmingham Silent Dinner List

At the 2009 silent dinner, those in attendance developed a list of restaurants as possible locations for the 2010 Silent Dinners. I used this list as a guide and tried to choose different locations and different types of menus. We will continue to meet on the second Thursday of every month. Try to arrive by 6:30 pm to make sure we can get tables. The Silent Dinner is a signing only experience. Please do not use your voice even on the outside of the restaurant. This is a wonderful way to get to know members of the Birmingham Deaf Community, local interpreters and other person's interests in signing. Please feel free to e-mail me back if you need more information regarding a location. We hope you will join us.

Thank you so much, Patty Sransky (patty.sransky@rehab.alabama.gov)

January 8, 2010	California Pizza Kitchen (Summitt)
February 12	Logan's Roadhouse (2740 John Hawkins Parkway-Hwy150)
March 12	Applebee's (579 Brookwood Village, Homewood)
April 9	Jade Palace (330 Inverness Corners)
May 14	Jim & Nick's (1660 Gadsden Hwy-Trussville)
June 11	Cheesecake Factory (Summitt)
July 9	Red Lobster (1041 Montgomery Highway-31)
August 13	Buffalo Wild Wings (2772 Highway 150)
September 10	Costa's Mediterranean (3443 Lorna Road, Hoover)
October 8	Mellow Mushroom (920 Inverness Corners)
November 12	Habanero's (1477 Gadsden Hwy-Trussville)
December 10	Olive Garden (Hoover Galleria)

Alabama Registry of Interpreters for the Deaf

Membership

Application		Fiscal Year: July 1, 2009 – June 30, 2010	
Name			
Address			
City-ST-Zip Code			
Contact Preference:			
Phone			
Email			
RID Member: (Circle one)	Yes	No	RID member number:

Payment:	
ALRID Membership Dues - \$25.00	
ITP Student Dues - \$15.00	
Donations: Scholarship Fund	
Training Fund	
After June 30 th , add \$5.00 Late Fee	
TOTAL:	



Information:	
Local Division:	
Credentials:	
Newsletter: (circle one)	Email or Postal

Payable to: ALRID
Check or money order can be made payable to ALRID and will serve as your receipt. <i>ALRID shall assess a \$25.00 fee for each check returned due to insufficient funds.</i>
Send application and payment to:
Susan Gordon, Secretary of ALRID 1305 37 TH Street East Tuscaloosa, AL 35405 205.554.1300 Susan.Gordon@rehab.alabama.gov

FOR OFFICE USE ONLY:	
Date received:	Check #:



Editor, The ALRID News
% Amelia J. England, ADRS
1305 37th Street, East
Tuscaloosa, AL 35405

Fax: 205-554-1369
E-mail:
amelia.england@rehab.alabama.gov



The ALRID News ADVERTISING!

ALRID does not necessarily endorse or support any products or businesses whose advertisements appear in the ALRID Newsletter. The ALRID Board makes the final decision on which ads to publish.

ADVERTISING RATES:

Full-page ad:	\$20.00
Half-page ad:	\$10.00
Quarter page ad:	\$5.00
Business card ad:	\$2.50

Email print-ready ad to:
Amelia.England@rehab.alabama.gov

Send appropriate fee to:

*Sue Graham, Vice-President
The ALRID NEWS
3867 Coaling Road
Sylacauga, AL 35151
Home: 256.369.1057
Cell: 276.708.5885
Email: msueg13@charter.net*

The ALRID News NEWSLETTER INFORMATION

Editor: *Amelia J. England*
Videophone: (205) 210-4067
Email: Amelia.England@rehab.alabama.gov

Volume 9 Publication Dates:

Issue 1: JUL/AUG Submissions Deadline: JUL 15
Issue 2: SEP/OCT Submissions Deadline: SEP 15
Issue 3: NOV/DEC Submissions Deadline: NOV 15
Issue 4: JAN/FEB Submissions Deadline: JAN 15
Issue 5: MAR/APR Submissions Deadline: MAR 15
Issue 6: MAY/JUN Submissions Deadline: MAY 15